

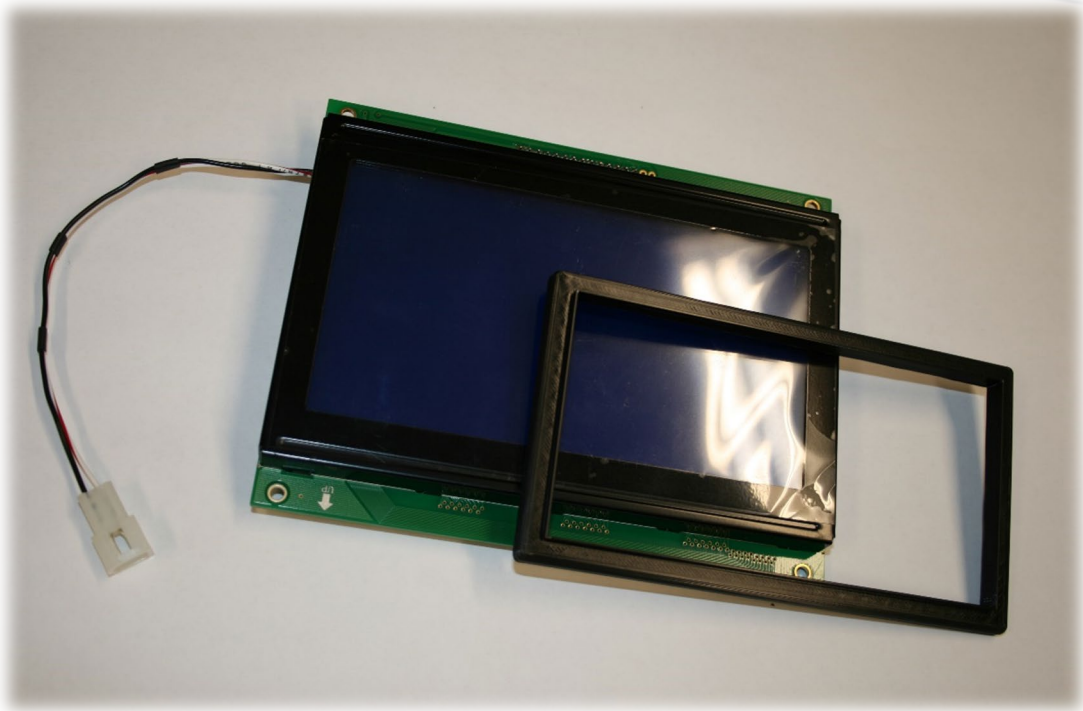
Humidity Generation and Calibration Equipment

THUNDER SCIENTIFIC®

CORPORATION THE HUMIDITY SOURCE

Model 2500

Liquid Crystal Display Replacement Procedure



Tech Support Document TSD-0315

Revision Date: July 11, 2023

623 WYOMING BLVD. SE



ALBUQUERQUE, NM 87123-3198
WWW.THUNDERSCIENTIFIC.COM



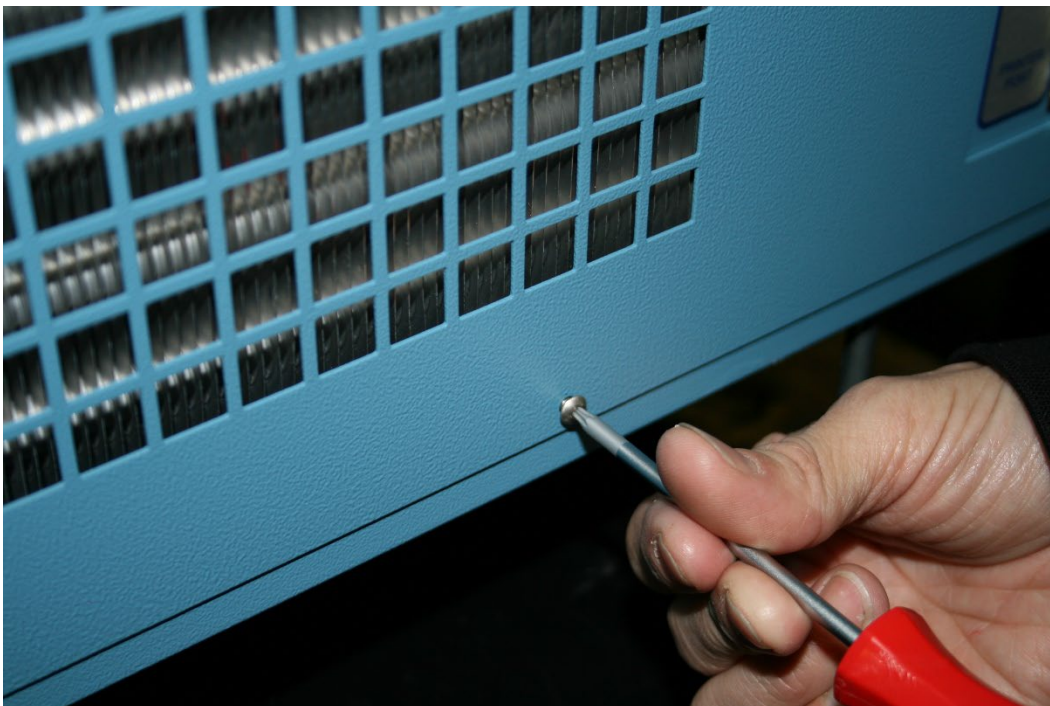
TEL: 505.265.8701
FAX: 505.266.6203

Model 2500 Liquid Crystal Display Upgrade Replacement Procedure

1. First turn the main power switch off.



2. Remove the left side panel using the #10 Torx driver.



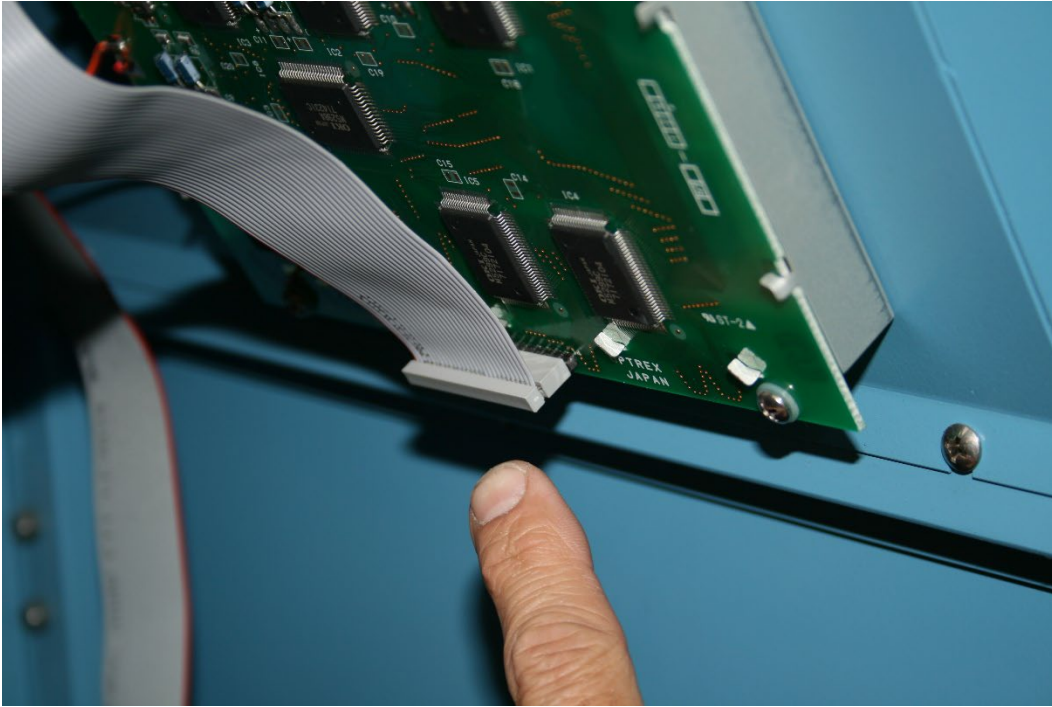
3. Remove the reservoir fill port cap.



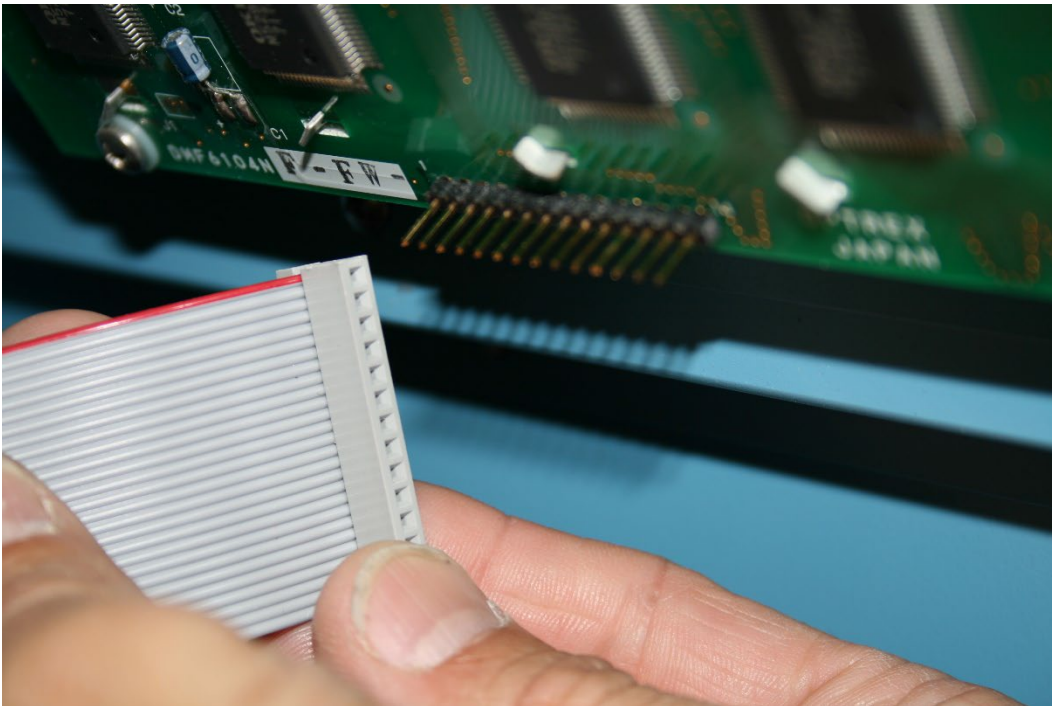
4. Remove the screws from the top left-hand panel and move the panel aside.



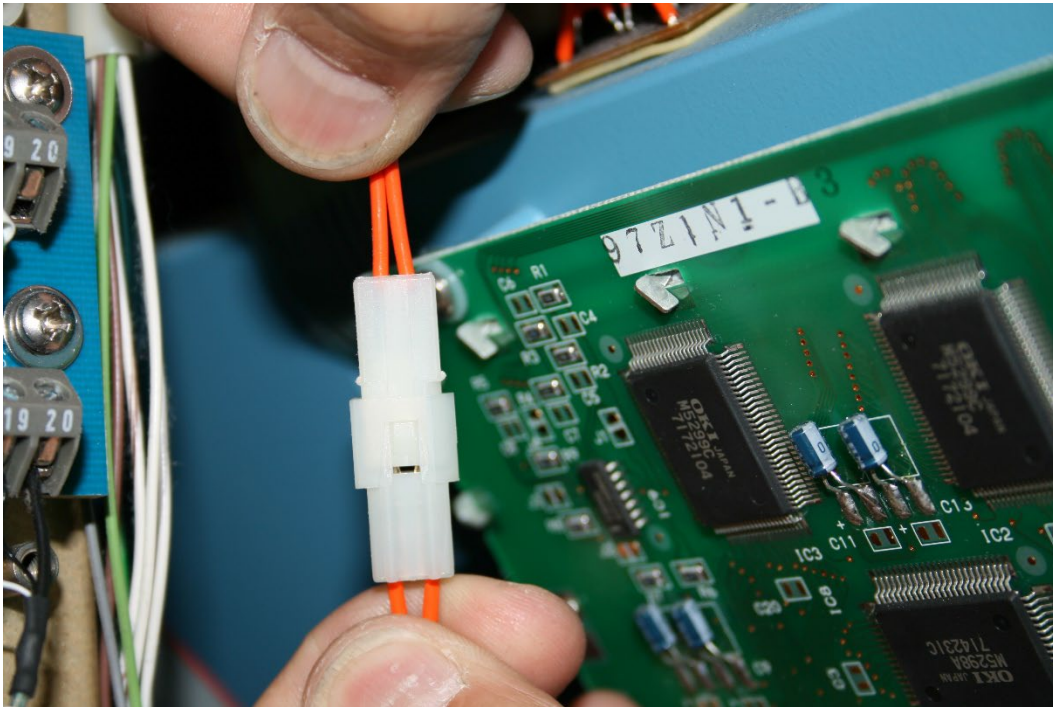
5. Locate the LCD Display Port ribbon cable.



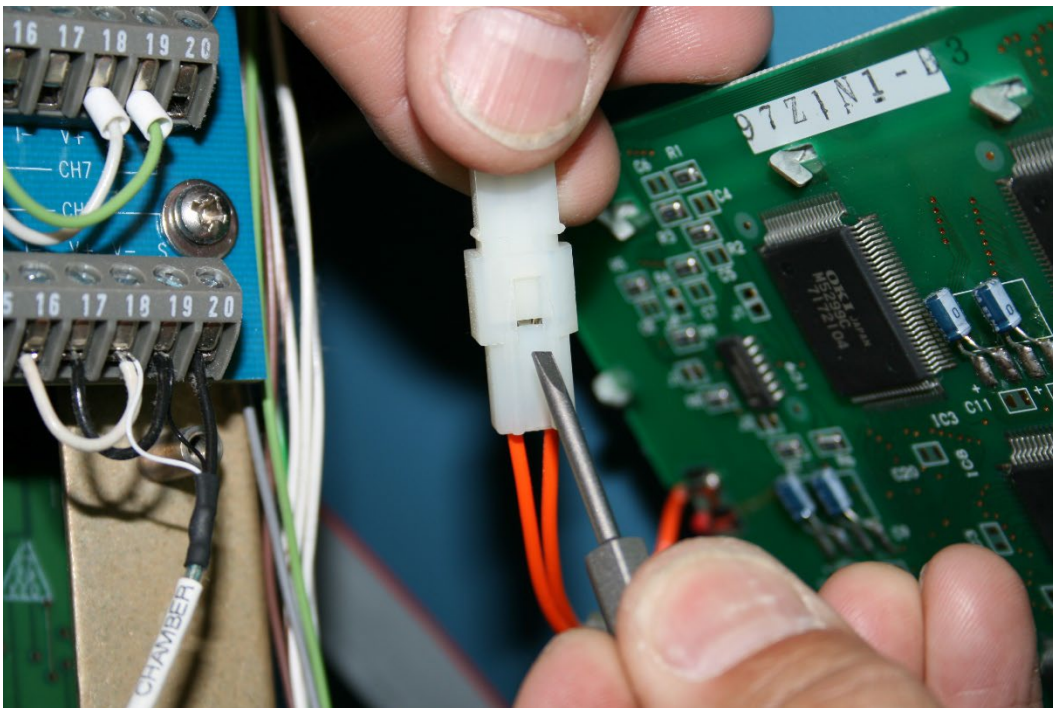
6. Slowly remove the ribbon cable and move it out of the way. Take note where the red pin one is.



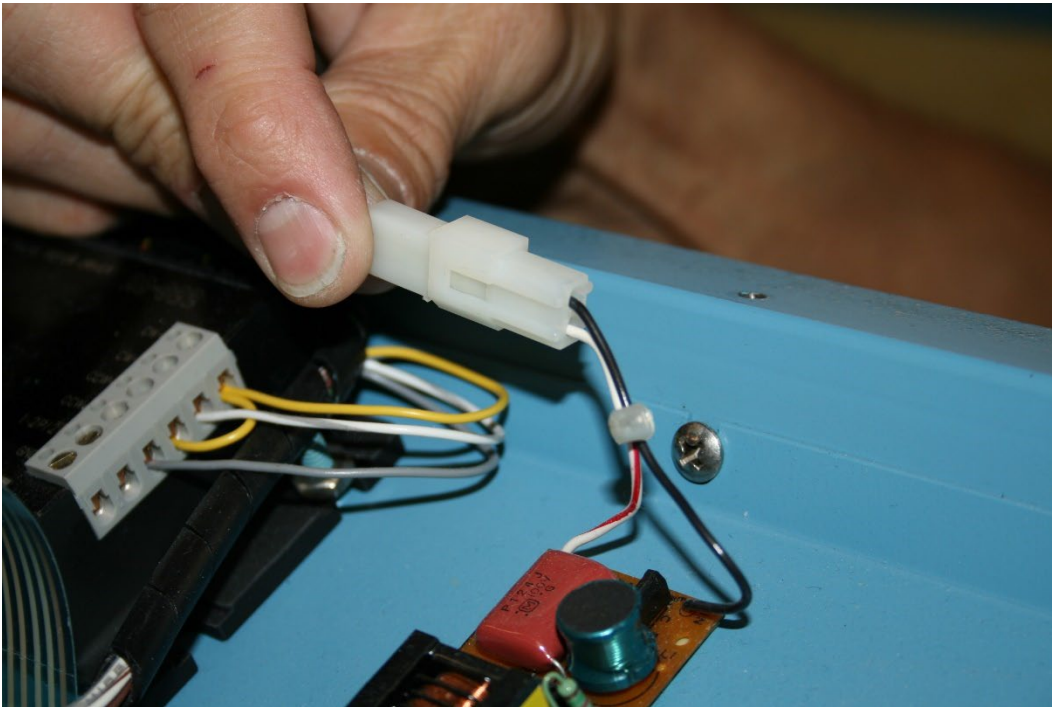
7. Locate the display inverter cable with the orange wires.



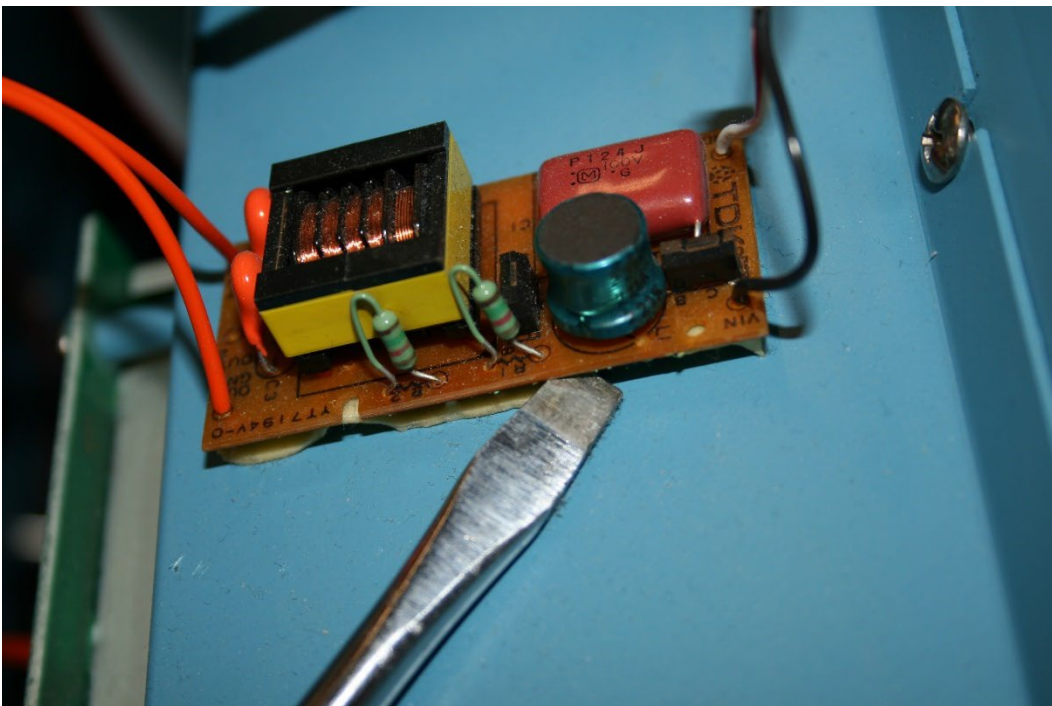
8. Pull the cable connectors apart, you may need to use a small flat head screwdriver to help.



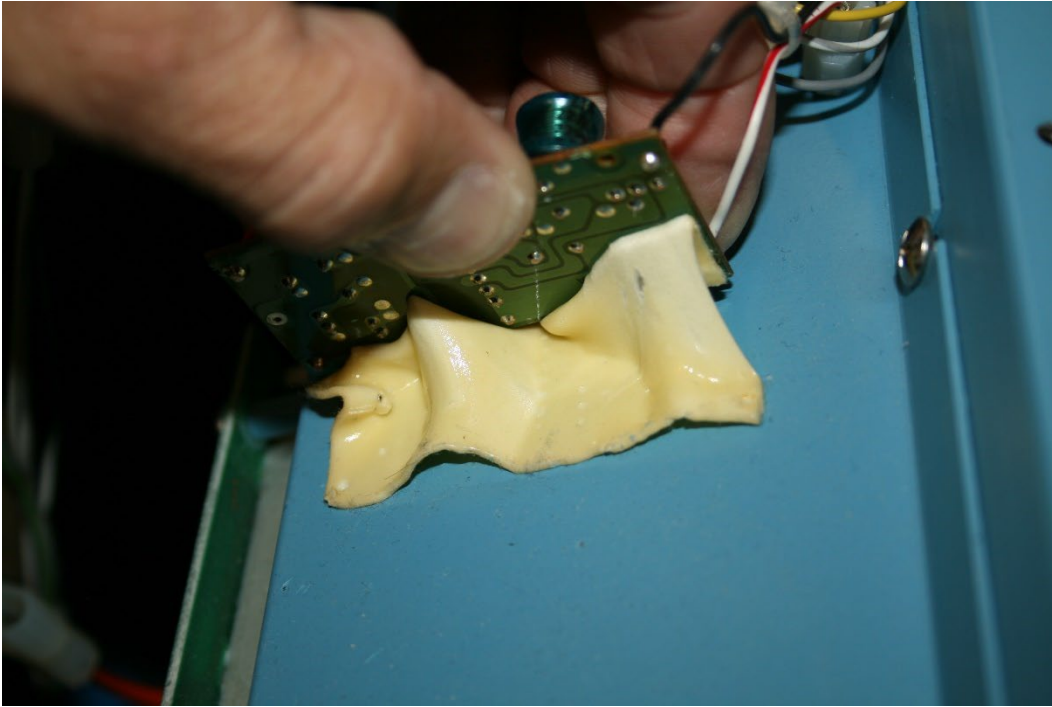
9. Locate the inverter board on top of the display hood and pull apart the two-pin connector.



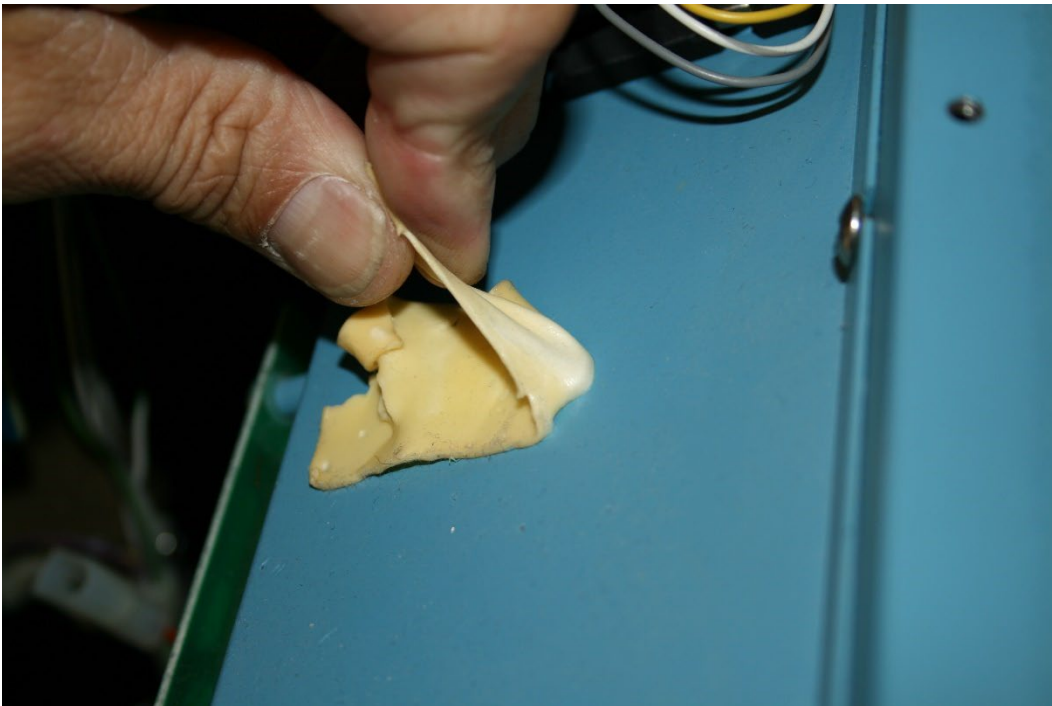
10. Next, gently pry up the inverter board using a flat head screwdriver.



11. Then pull it off and discard properly.



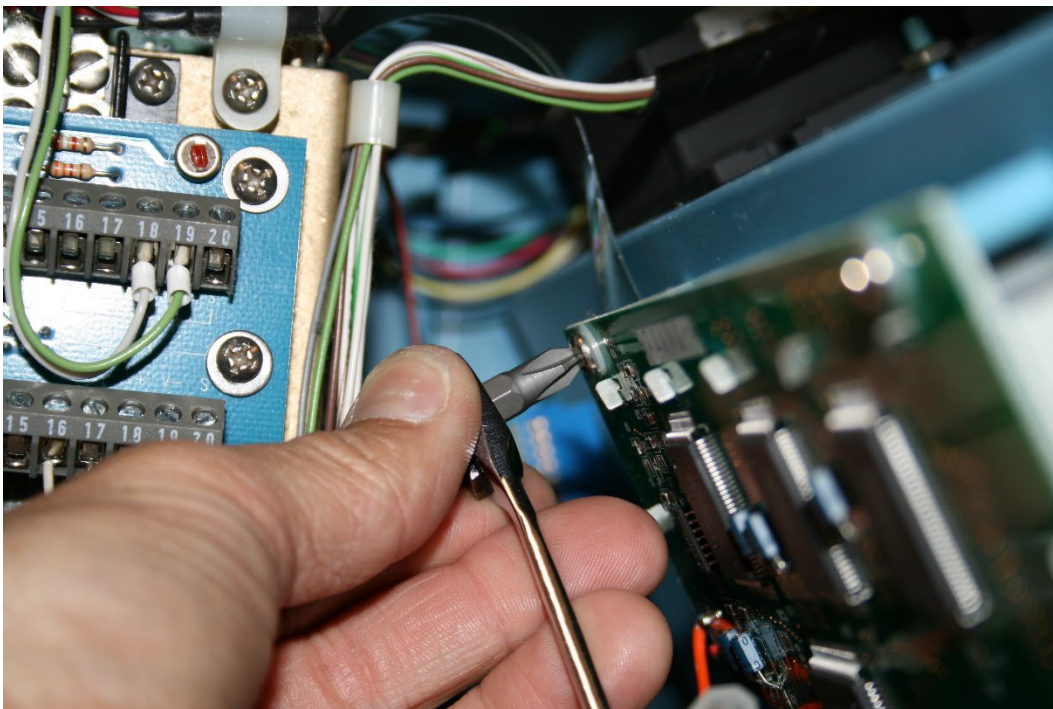
12. Remove the remaining double-sided tape and clean the hood.



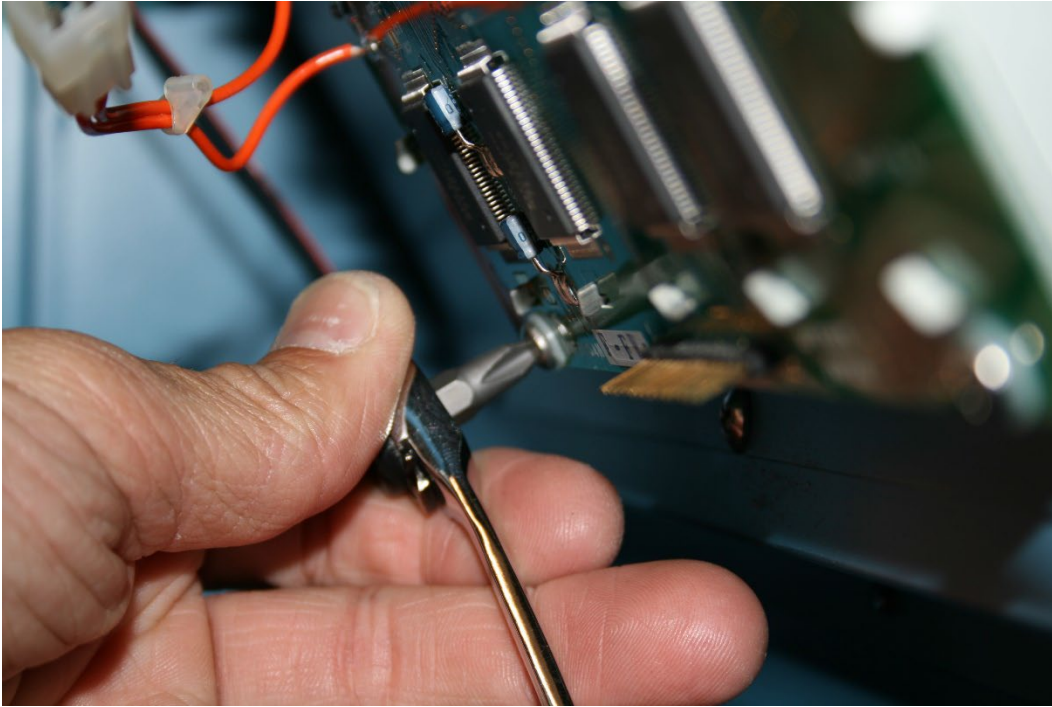
13. Locate the four mounting screws on the liquid crystal display.



14. Now using a number 1 Philips head screwdriver with a 90° bend or a ratchet drive, loosen but do not remove the top left-hand and right-hand screws.



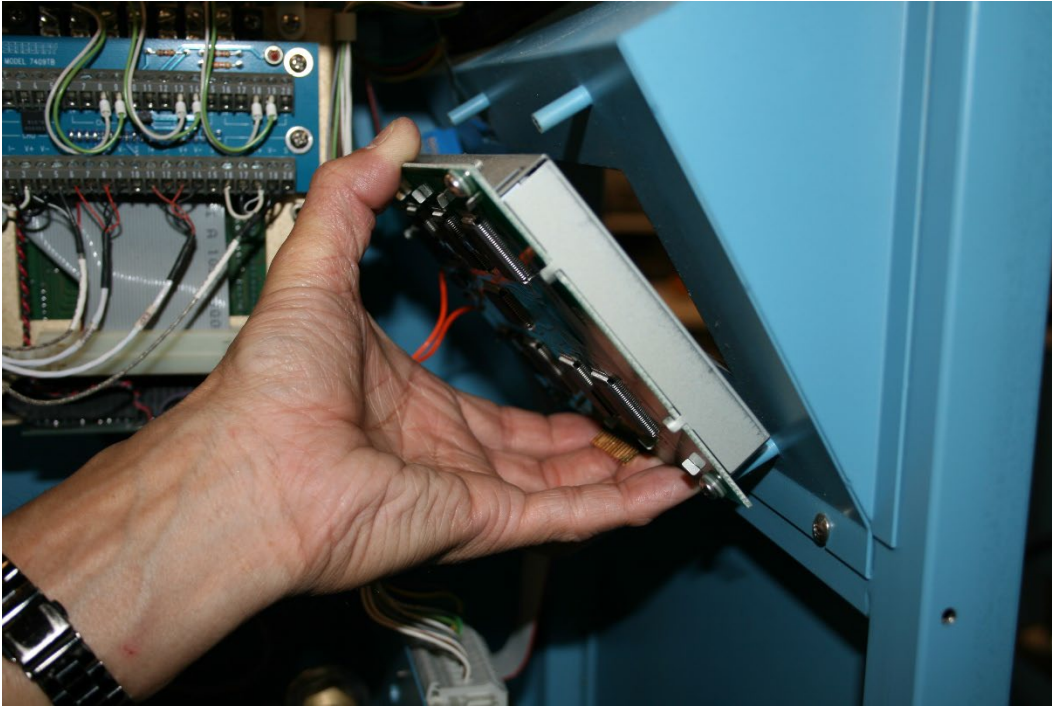
15. Next loosen the two bottom screws.



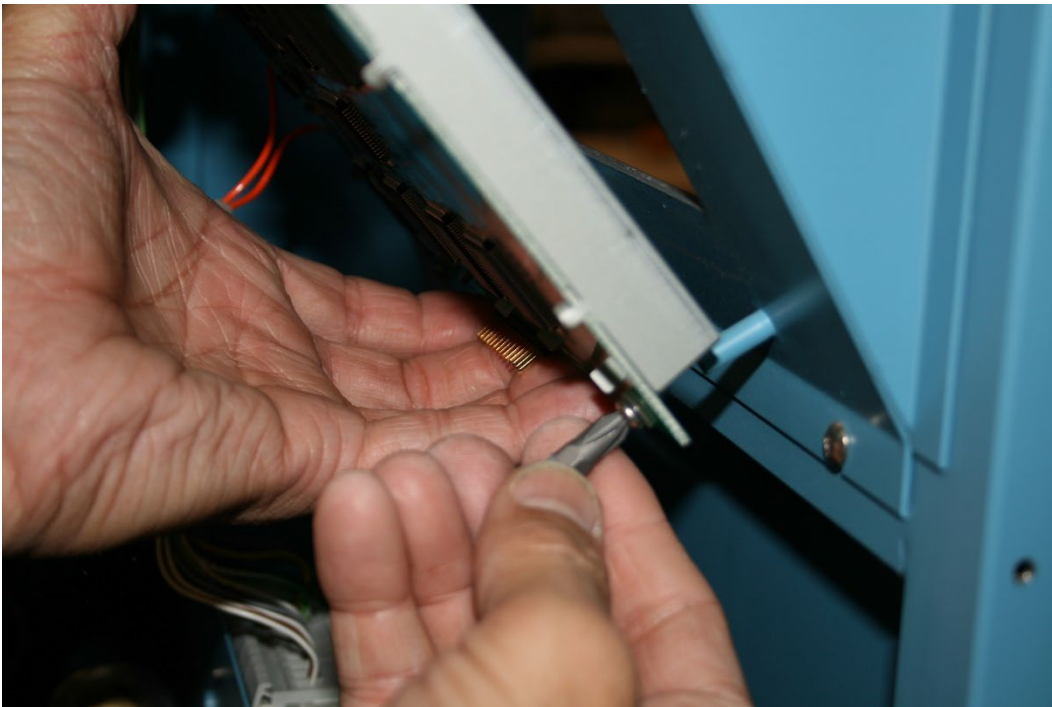
16. Remove the two top screws and save the top right-hand one along with the nylon washer.



17. Rotate the display slightly downward.



18. Now remove the two bottom screws, save them along with the nylon washers, and remove the display and discard properly.



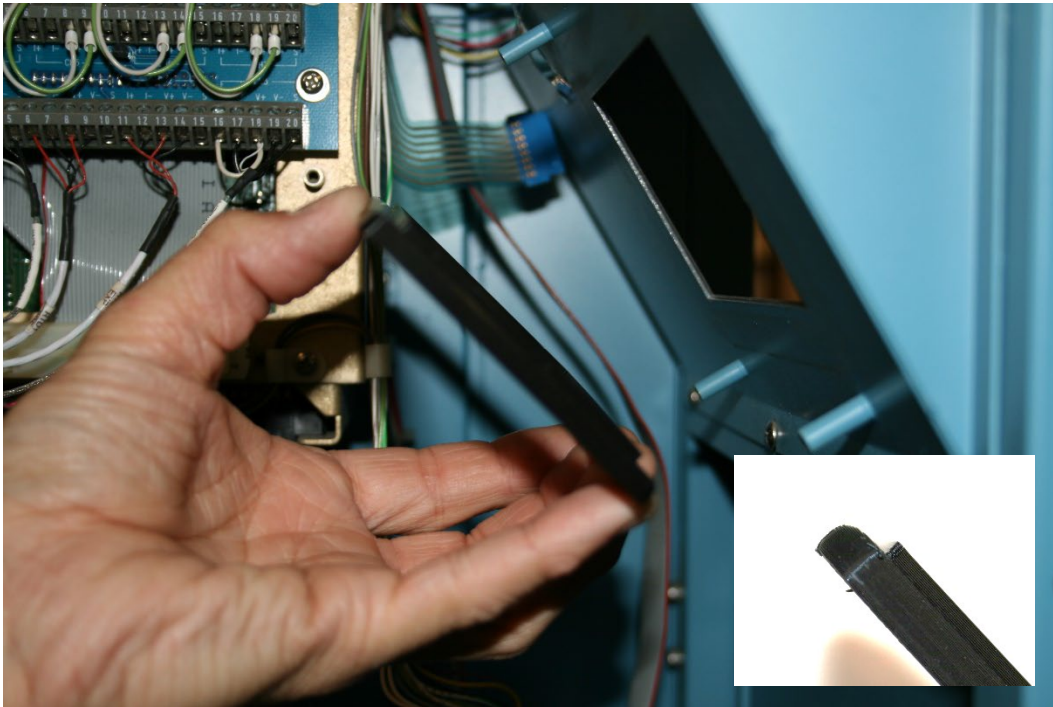
19. Next, take the display bezel and some clear tape (not provided).



20. Then tear off about one inch of the clear tape.



21. Take the bezel and insert the small side in the rear of the display hood.



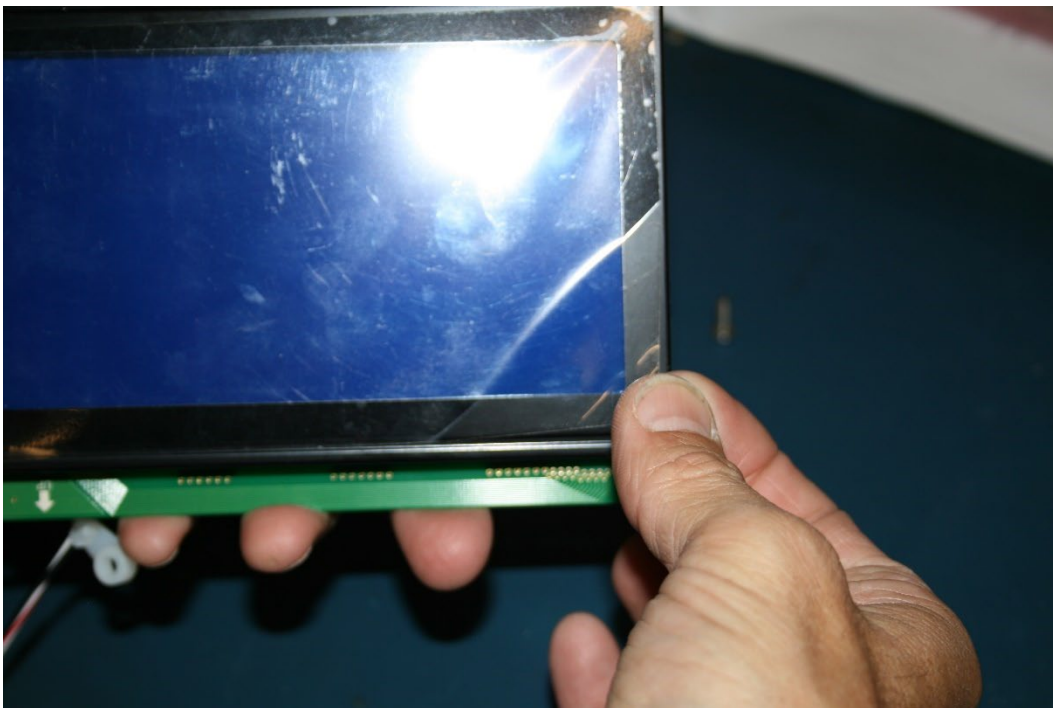
22. While holding the bezel in place with one hand, use the other hand to tape just the edge of the bezel.



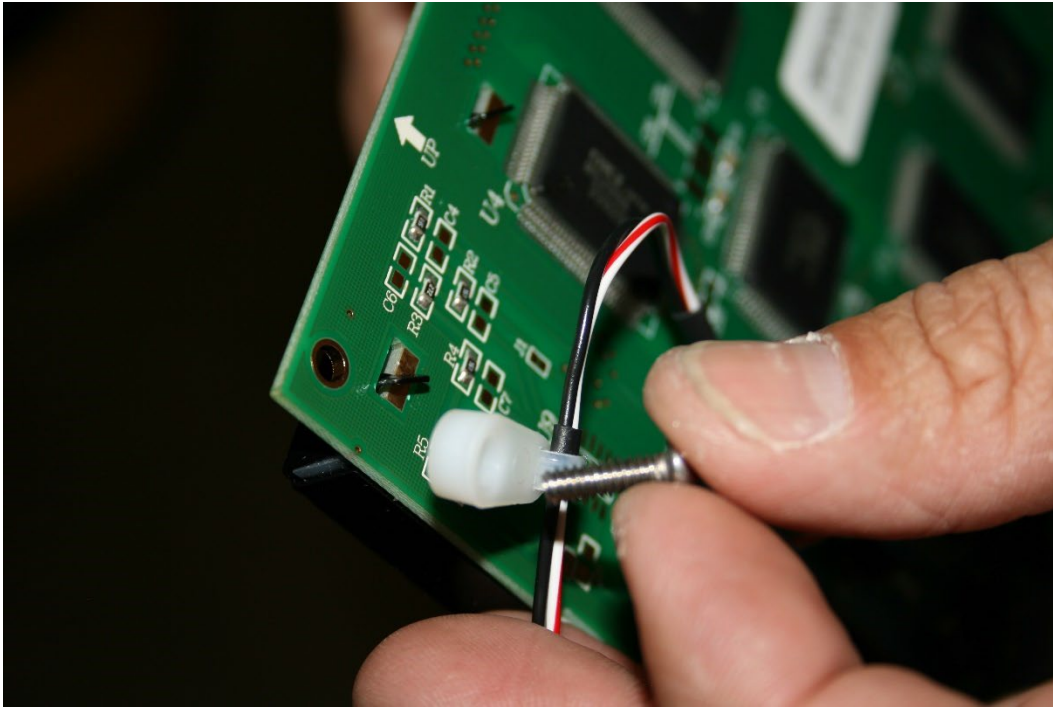
23. Take another piece of tape and do the same for the top of the bezel.



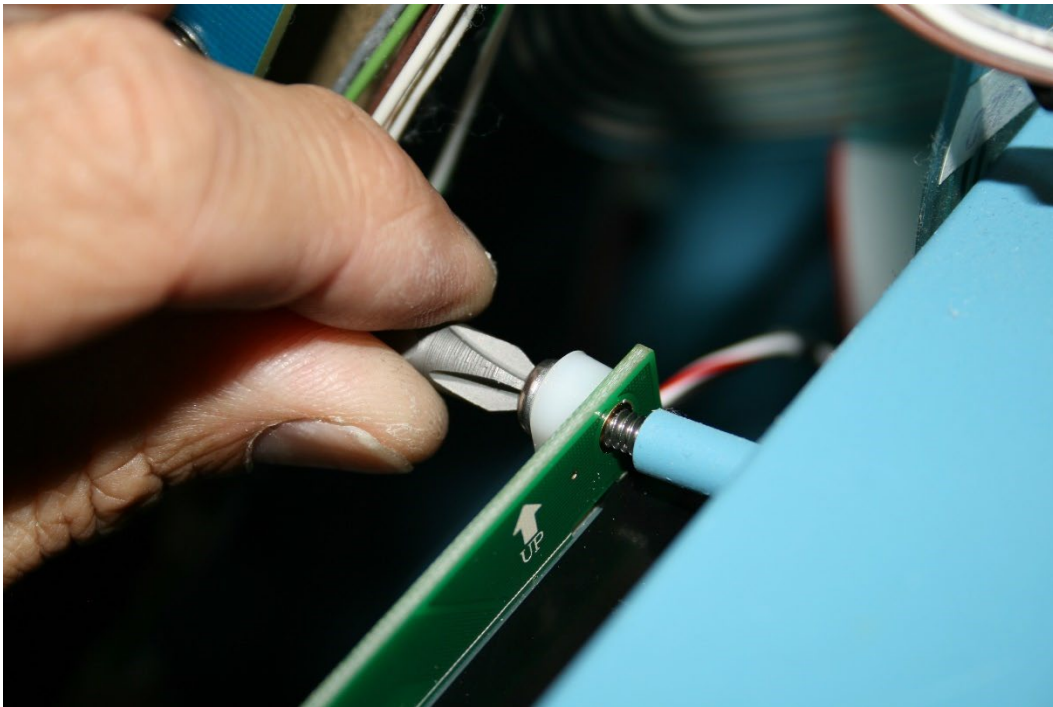
24. Get the new liquid crystal display assembly and remove the clear film protective cover.



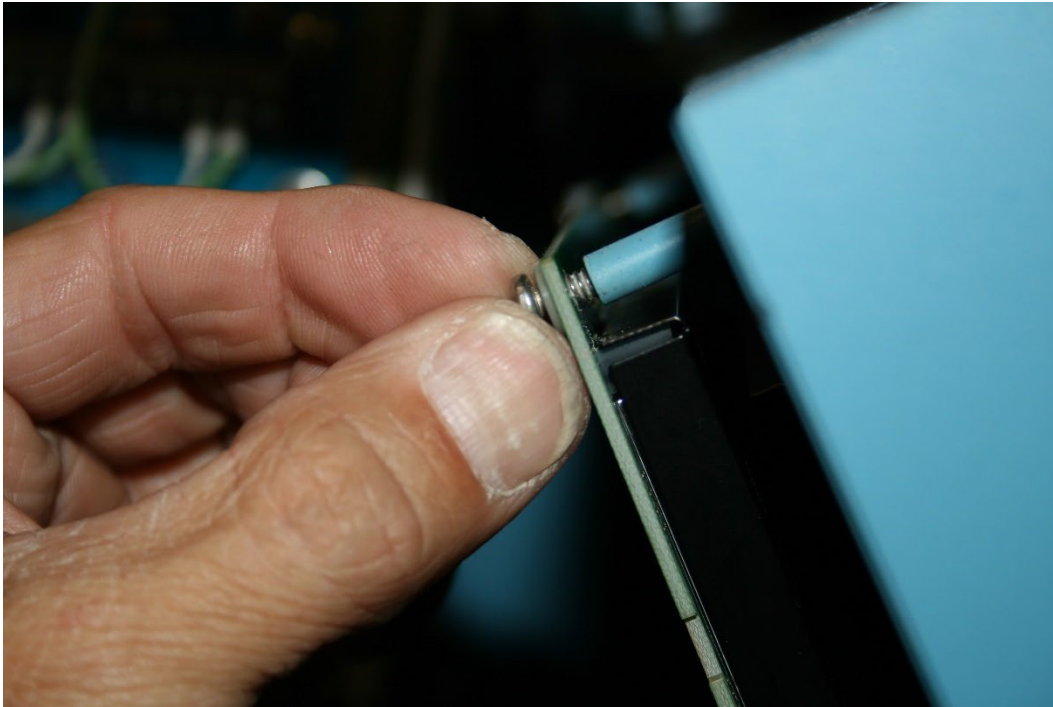
25. Take the 1/2" screw that was provided and slide it through the cable tie in the upper left-hand corner of the of the display.



26. Using the same 1/2" screw, install the display on the upper left-hand standoff.



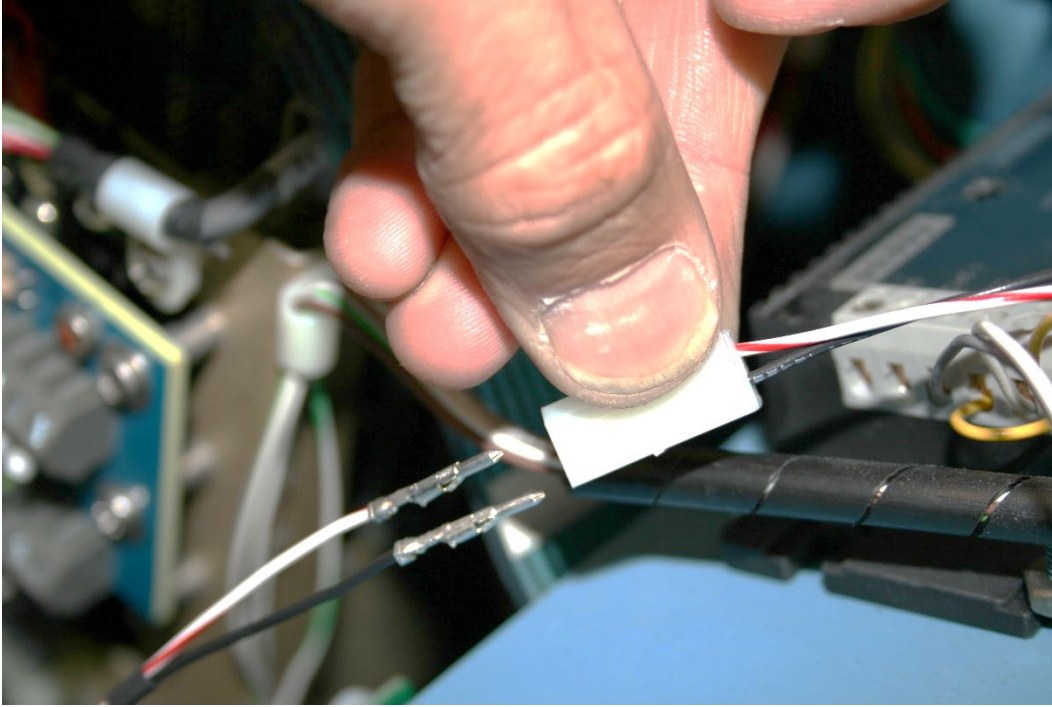
27. Install one of the three screws along with the nylon washer that you saved in the upper right-hand corner.



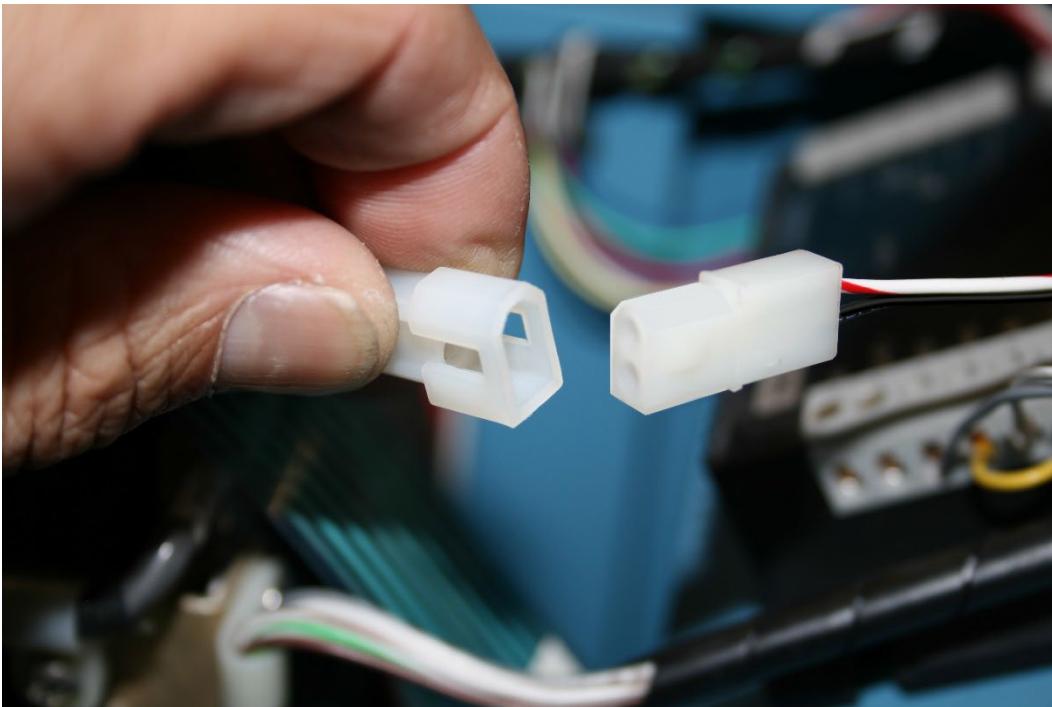
28. Install the lower two screws along with their nylon washers and tighten all the screws.



29. Take the wire harness from the display and the wire harness on the display hood and match the wire colors on the connector.



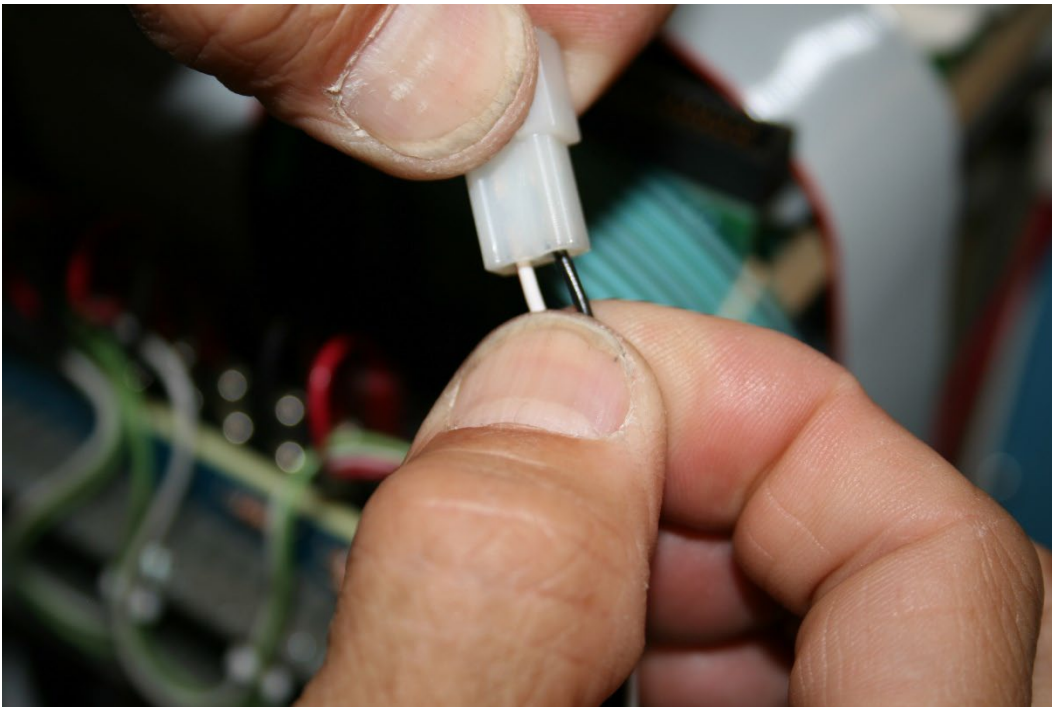
30. Match the keys on each of the connectors before pushing the wire pins in each socket.



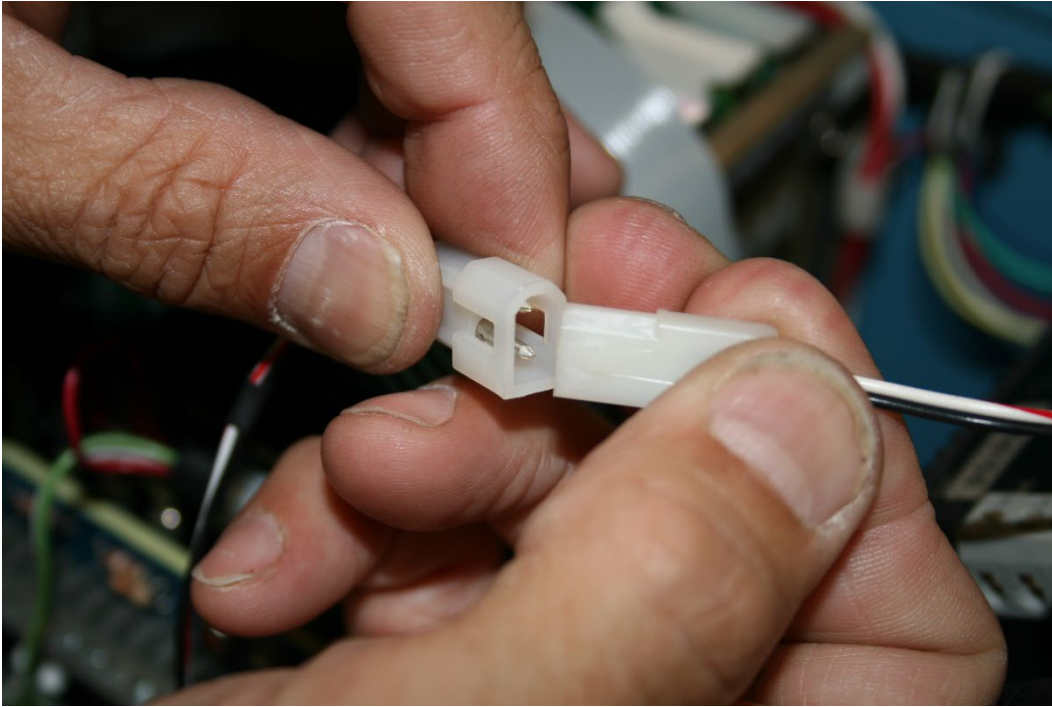
31. Push the wire pins in each socket to match the other socket on the opposite connector.



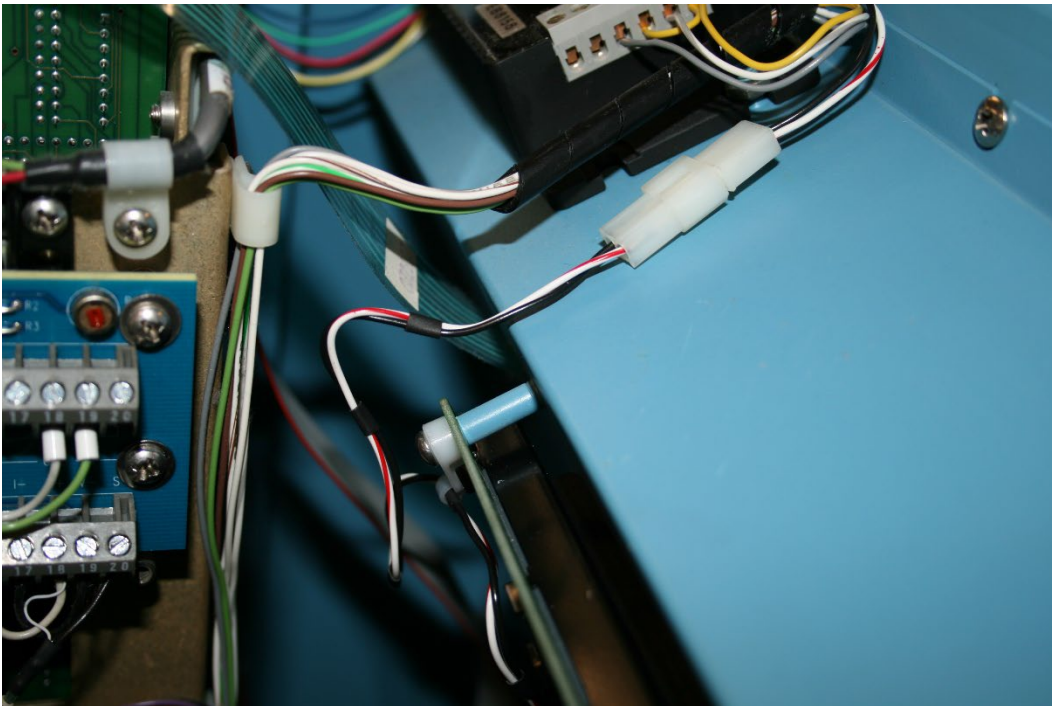
32. After pushing the wires in each socket, make sure they click and then give a gentle pull to see if they are secure.



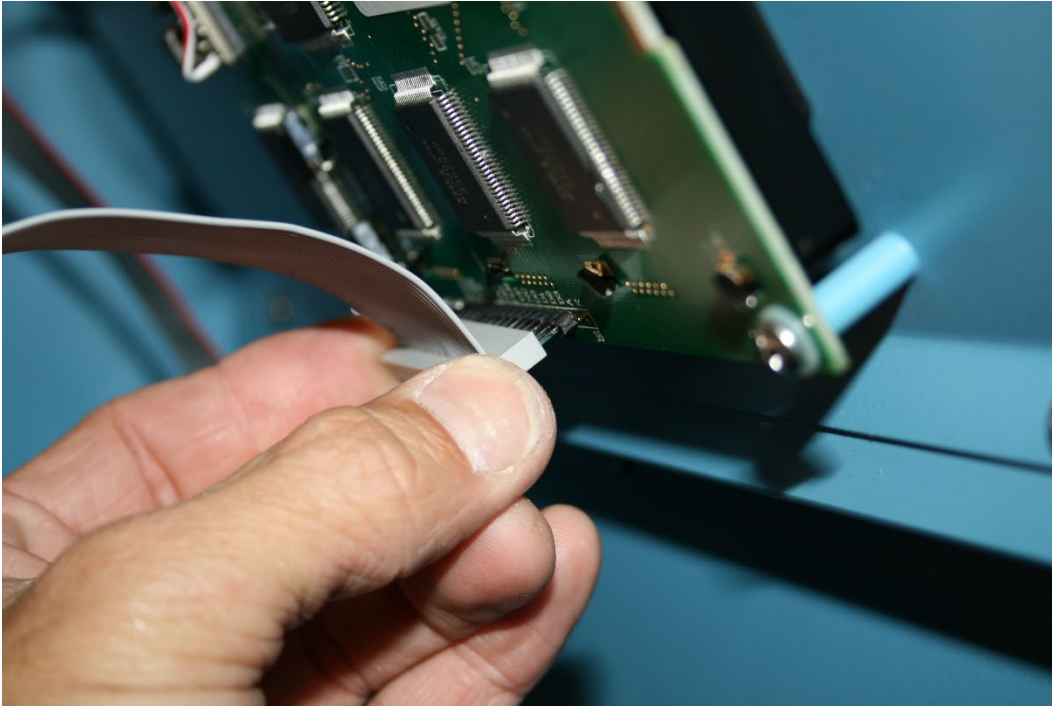
33. Now match the two keys on the connectors and push them together.



34. Position the wire harness so that it's out of the way.



35. Push the ribbon cable onto the display pins snugly making sure that the red side is on pin one.



36. Remove the tape from the bezel at the top and bottom.



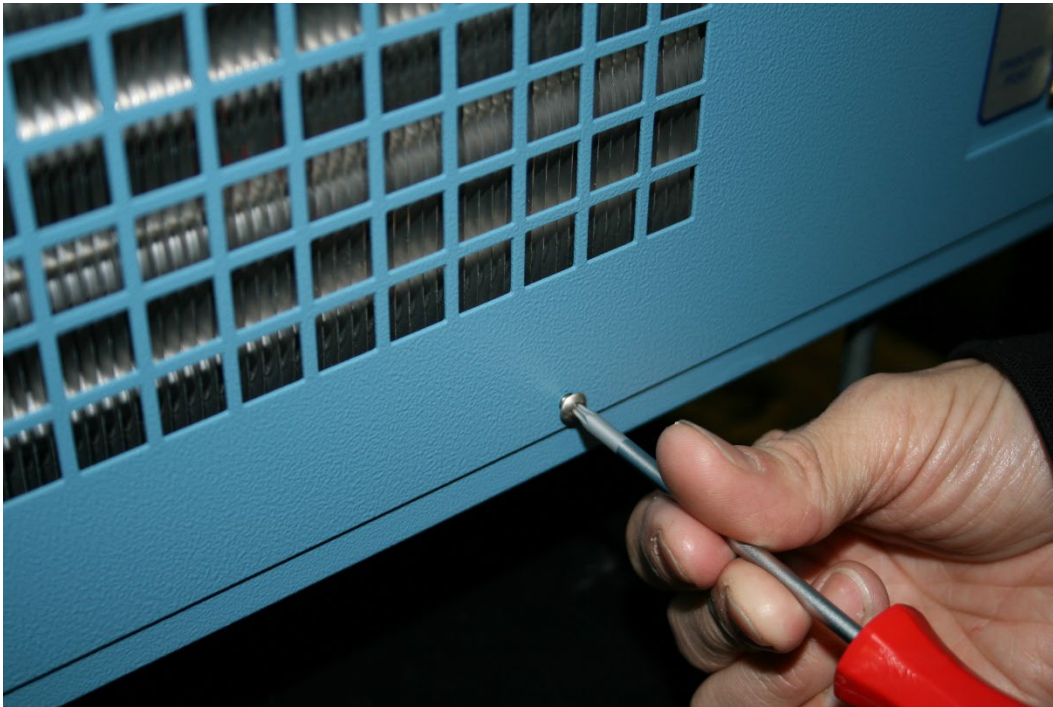
37. Turn on the main power switch.



38. Check to see if the liquid crystal display comes on.



39. Put the side panel back on.



40. Replace the top panel.



41. Screw on the reservoir cap.



Please Call 1-800-872-7728 or E-mail support@thunderscientific.com should you have any questions.