

IMPORTANT

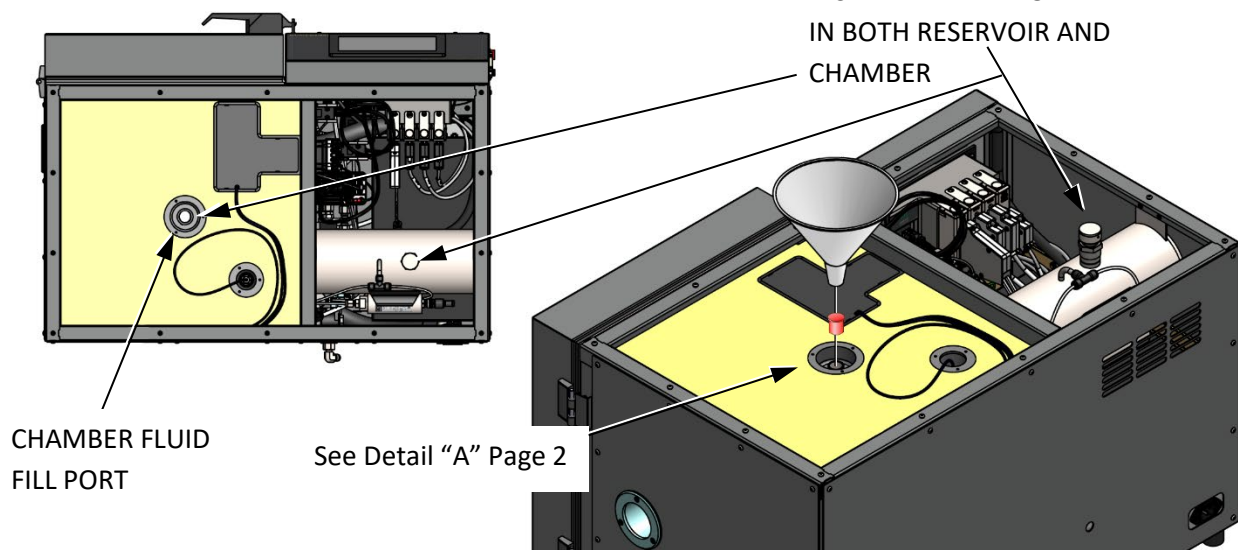
CHAMBER FLUID HAS BEEN DRAINED PRIOR TO SHIPMENT! CHAMBER FLUID MUST BE ADDED BEFORE OPERATING THE 1220.

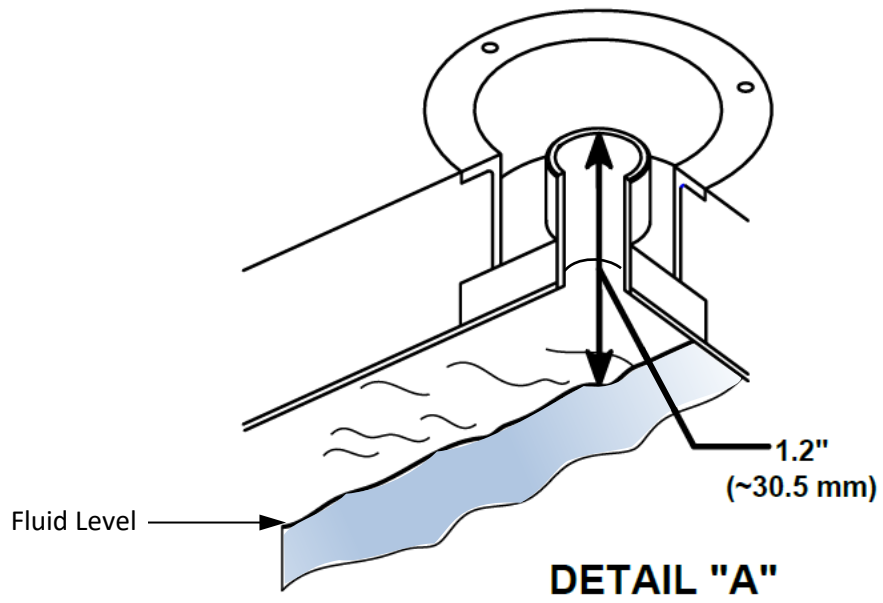
Go to page 10 and 11 in your 1220 Quick Start Guide for chamber filling procedure

REFER TO PARAGRAPH 2.12.3.1 "CHAMBER FILLING PROCEDURE" --

1. Ensure the main power switch is OFF.
2. Remove the top console panel.
3. Locate fluid fill port under insulation.
4. Remove the "Red" cap and insert funnel into fluid fill port.
5. Add 4.25L/1.12 U.S. gallon of distilled water. Fill with distilled water until the level is approximately 1.2" (30 mm) below the top of the fill port.
6. Switch power ON and reboot the generator. Operate at 25C and 50%RH for approximately five minutes to remove any trapped air.
7. Measure level at the fill port and add water if necessary.
8. Remove funnel and replace fluid fill port cap and insulation.
9. Replace top console panel.

Refer to drawing: [1220D905-1](#)





Chamber Fluid Fill Port Cut-A-Way.